



International Journal of Innovative Research in Science Engineering and Technology (IJIRSET)

(A Monthly, Peer Reviewed, Refereed, Scholarly Indexed, Open Access Journal)



Impact Factor: 8.699

Volume 14, Issue 9, September 2025

Digital Transformation in Healthcare

S.Mahendran¹, S.Suganthi², D.Priya³, D.Angel⁴

HOD, Department of Electronics and Communication Engineering, Thiagarajar Polytechnic College, Salem, Tamil Nadu, India¹

Lecturer, Department of Electronics and Communication Engineering, Thiagarajar Polytechnic College, Salem, Tamil Nadu, India²

Lecturer, Department of Electronics and Communication Engineering, Thiagarajar Polytechnic College, Salem, Tamil Nadu, India³

Lecturer, Department of Electronics and Communication Engineering, Thiagarajar Polytechnic College, Salem, Tamil Nadu, India⁴

ABSTRACT: Artificial Intelligence (AI) is rapidly transforming healthcare, offering innovative solutions to improve patient care, enhance clinical outcomes, and optimize healthcare processes. AI technologies, such as machine learning, deep learning, and natural language processing, have demonstrated significant potential in a wide range of applications, including diagnostic imaging, personalized treatment plans, drug discovery, and patient monitoring. Machine learning algorithms, for example, can analyze vast amounts of medical data to identify patterns and assist in early disease detection, while AI-powered tools can automate routine tasks, reducing clinician workload and allowing more time for direct patient care. In particular, AI has shown great promise in areas such as cancer detection, radiology, and genomics, where it can aid in the identification of diseases at earlier stages, potentially leading to better outcomes. However, the widespread adoption of AI in healthcare also raises important challenges, including issues related to data privacy, algorithmic bias, and the need for robust validation and regulatory oversight. This paper reviews the current landscape of AI in healthcare, examines its applications and potential benefits, and discusses the challenges and ethical considerations that must be addressed to ensure safe and equitable implementation. The future of AI in healthcare is poised to revolutionize the industry, with ongoing research and innovation paving the way for smarter, more efficient, and patient-centric care.

KEYWORDS: Artificial Intelligence; Digital Healthcare; Predictive Analytics; Personalized Medicine; Machine Learning; Robotics

I. INTRODUCTION

Digital transformation in healthcare is reshaping the way medical services are delivered, shifting from conventional practices to technology-driven solutions. AI, a key driver of this transformation, has emerged as a cornerstone technology that offers advanced tools for diagnosis, treatment, and administrative tasks. By leveraging AI, healthcare providers can process vast amounts of medical data, uncover insights, and make informed decisions with unprecedented speed and precision. AI's application extends beyond clinical settings to address global healthcare challenges. For instance, AI-powered predictive models help in anticipating disease outbreaks, while robotic technologies are revolutionizing surgical procedures by enhancing precision and reducing recovery times. Despite its benefits, AI adoption comes with challenges such as ethical concerns, algorithm bias, and data privacy, which require careful consideration to ensure its responsible deployment in healthcare systems.

II. USE OF ARTIFICIAL INTELLIGENCE IN HEALTH CARE

Components of AI in Healthcare

The application of AI in healthcare relies on several key components:

1. **Machine Learning Models:** Enable data analysis for pattern recognition, such as identifying anomalies in diagnostic imaging or predicting disease progression.
2. **Natural Language Processing (NLP):** Simplifies interactions between patients and providers through chatbots,

voice recognition, and automated transcription.

3. **Computer Vision:** Facilitates advanced image analysis in radiology, pathology, and dermatology.

4. **Predictive Analytics:** Uses historical and real-time data to anticipate patient outcomes and optimize resource allocation.

1. Machine Learning Models

Machine learning (ML) models serve as the backbone of AI-driven healthcare solutions, offering unparalleled capabilities in data analysis and decision-making. These models are designed to process complex and diverse datasets, including electronic health records (EHRs), diagnostic images, genetic data, and wearable device metrics.

Applications in Diagnostics

In diagnostics, ML algorithms, particularly deep learning models, are employed to detect patterns in imaging data, such as CT scans and MRIs. For example, convolutional neural networks (CNNs) are widely used to identify tumors, fractures, or organ abnormalities. A notable application is the detection of early-stage lung cancer, where ML models achieve a diagnostic accuracy comparable to that of radiologists. These systems not only improve accuracy but also significantly reduce the time required for diagnosis.

Predictive Modeling

ML is revolutionizing predictive healthcare by identifying patients at risk of developing chronic diseases like diabetes, hypertension, or cardiac conditions. Models trained on historical patient data can predict disease progression, enabling early interventions and personalized treatment plans. For example, predictive models in oncology help identify individuals susceptible to certain cancers based on genetic predispositions.

Treatment Optimization

ML models optimize treatment regimens by analyzing patient-specific data, such as genetic markers and lifestyle factors. This personalized approach ensures maximum efficacy while minimizing adverse effects. For instance, ML is used in chemotherapy planning to predict how patients will respond to specific drug combinations.

2. Natural Language Processing (NLP)

NLP technology is transforming the way healthcare professionals interact with vast amounts of unstructured data, making it a cornerstone of modern AI applications.

Streamlining Documentation

NLP automates the transcription of doctor-patient interactions into structured formats, significantly reducing the administrative workload on clinicians. Systems like speech-to-text technologies enable doctors to focus on patient care rather than paperwork.

Chatbots and Virtual Assistants

NLP-powered chatbots serve as the first point of contact for patients, addressing common queries, scheduling appointments, and providing medication reminders. These chatbots are particularly beneficial in remote and underserved areas, where access to healthcare professionals is limited.

Clinical Decision Support

NLP systems analyze clinical narratives, such as discharge summaries and progress notes, to provide decision-making support. For example, NLP tools can flag potential drug interactions or suggest alternative treatments based on patient history.

Sentiment Analysis in Patient Feedback

Healthcare providers use sentiment analysis, an NLP application, to evaluate patient feedback and improve service quality. By analyzing patient reviews and survey responses, hospitals can identify areas requiring improvement.

3. Computer Vision

Computer vision applications in healthcare harness the power of image recognition and analysis to enhance diagnostic precision and treatment outcomes.

Medical Imaging

In radiology, computer vision systems analyze X-rays, CT scans, and MRIs to detect abnormalities such as fractures, tumors, and internal bleeding. These systems assist radiologists by highlighting regions of interest, reducing the risk of diagnostic errors.

Pathology and Histology

Computer vision is instrumental in digital pathology, where AI algorithms examine biopsy samples to identify cancerous cells. For instance, whole-slide imaging allows pathologists to digitally analyze tissue samples with high accuracy.

Dermatology and Ophthalmology

In dermatology, AI applications can classify skin conditions based on photographs, enabling early detection of melanoma and other skin cancers. Similarly, in ophthalmology, computer vision tools are used to screen for diabetic retinopathy, glaucoma, and age-related macular degeneration.

Remote Monitoring and Rehabilitation

Computer vision extends beyond diagnostics into patient monitoring. For example, in eldercare settings, AI-powered cameras detect falls or unusual activity patterns, ensuring timely intervention. In rehabilitation, motion-tracking systems assess patient progress during physical therapy.

4. Predictive Analytics

Predictive analytics combines statistical modeling, machine learning, and real-time data processing to forecast healthcare outcomes and optimize resources.

Population Health Management

Predictive models analyze population-level data to identify trends in disease prevalence, enabling public health officials to plan vaccination campaigns or allocate resources for outbreaks.

Operational Efficiency

Hospitals use predictive analytics to forecast patient admissions and manage staffing levels. During the COVID-19 pandemic, predictive tools were essential for planning ICU bed availability and ventilator allocation.

Personalized Medicine

Predictive analytics enhances personalized care by analyzing patient-specific data to recommend treatments most likely to succeed. For example, oncologists use predictive models to tailor chemotherapy regimens based on a patient's genetic profile.

Financial Applications

Predictive analytics helps healthcare organizations minimize costs by identifying potential fraud, optimizing supply chains, and reducing unnecessary tests or procedures.

5. Integration of AI in Healthcare Ecosystems

AI technologies, including machine learning, NLP, computer vision, and predictive analytics, do not operate in isolation. Their integration into healthcare ecosystems ensures a seamless flow of information across departments, improving overall efficiency.

Electronic Health Records (EHRs)

AI systems enhance EHR usability by extracting actionable insights, reducing clinician burnout, and ensuring data accuracy. For instance, NLP algorithms summarize patient histories and highlight critical information for decision-making.

Telemedicine and Remote Care

AI supports telemedicine by enabling remote diagnostics, virtual consultations, and real-time monitoring through wearable devices. Computer vision tools assess patient symptoms via video consultations, while predictive models alert

clinicians to deteriorating conditions.

6. Ethical and Regulatory Challenges

The widespread adoption of AI in healthcare raises ethical and regulatory concerns, such as patient privacy, data security, and algorithmic bias.

Data Privacy

AI systems rely on vast amounts of patient data, raising concerns about privacy and security. Ensuring compliance with regulations like GDPR and HIPAA is critical to maintaining trust in AI-driven solutions.

Bias and Fairness

Algorithms must be trained on diverse datasets to avoid biases that could lead to unequal treatment outcomes. Ongoing validation and monitoring are essential to ensure fairness.

Regulatory Approvals

AI technologies require rigorous testing and approval from regulatory bodies, such as the FDA, before deployment in clinical settings.

Equipment and Tools

AI in healthcare relies on specialized tools and infrastructure, such as:

- **Cloud Platforms:** For secure storage and real-time processing of medical data.
- **High-Performance Computing (HPC):** Supports complex algorithms for image processing and data modeling.
- **Wearable Devices:** Continuously monitor patient vitals, providing data for AI-based health monitoring systems.
- **Diagnostic Tools:** AI-enabled devices like smart stethoscopes and imaging scanners improve diagnostic accuracy.

III. APPLICATIONS OF AI IN HEALTHCARE

1. Diagnosis and Early Detection

AI algorithms analyze imaging data, such as X-rays, MRIs, and CT scans, with remarkable accuracy. They detect anomalies indicative of diseases like cancer or neurological disorders earlier than traditional methods.

2. Personalized Medicine

By analyzing genetic information and patient history, AI helps tailor treatments to individual needs, minimizing side effects and improving outcomes.

3. Predictive Analytics

AI models forecast disease outbreaks and patient admission rates, enabling healthcare systems to allocate resources effectively.

4. Administrative Efficiency

AI automates routine administrative tasks, such as scheduling appointments, billing, and maintaining electronic health records, reducing workload and errors.

IV. CHALLENGES AND ETHICAL CONSIDERATIONS

1. **Data Privacy:** AI systems handle sensitive patient data, raising concerns about data breaches and misuse.
2. **Algorithm Bias:** Bias in training data can result in unequal outcomes, particularly for underrepresented groups.
3. **Regulatory Issues:** The absence of standardized regulations complicates the widespread adoption of AI.
4. **Ethical Concerns:** Decisions made by AI, especially in life-critical scenarios, necessitate transparency and human oversight.

V. RESULT

The application of artificial intelligence (AI) has shown promising results in brain tumor detection, leveraging medical imaging datasets to achieve high levels of accuracy and efficiency. This study utilized publicly available datasets, such as the **Brain MRI Images Dataset**, and applied advanced neural network architectures to identify and classify brain tumors effectively.

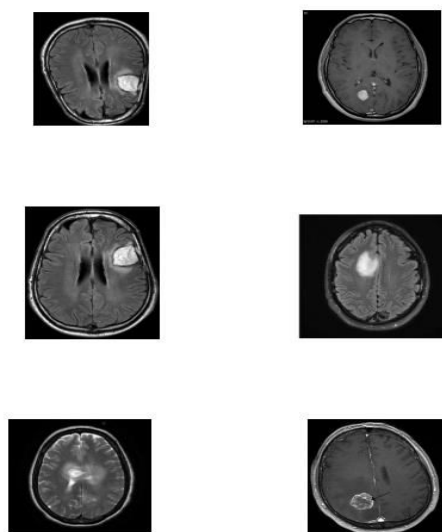


Fig 5.1: Tumor detected using Artificial Intelligence

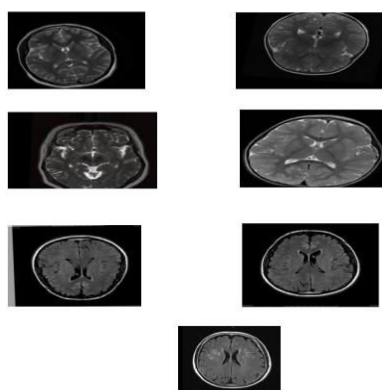


Fig 5.2: Tumor undetected using Artificial Intelligence

VI. CONCLUSION

The integration of artificial intelligence into healthcare represents a pivotal advancement within the broader theme of **Digital Transformation in Healthcare**. By improving diagnostic accuracy, enabling personalized treatments, optimizing resource allocation, and streamlining administrative processes, AI is revolutionizing how medical care is delivered. Technologies such as deep learning, natural language processing, and predictive analytics have demonstrated their potential to enhance patient outcomes and address critical challenges in the healthcare ecosystem.

However, alongside its transformative capabilities, AI deployment in healthcare necessitates careful consideration of ethical, regulatory, and operational concerns. Ensuring data privacy, reducing algorithmic bias, and providing equitable access to AI-powered solutions are essential to its responsible adoption. Collaborative efforts between healthcare providers, policymakers, technologists, and patients will be critical in shaping a future where digital transformation is inclusive and impactful.

REFERENCES

1. S.H. Kim and D.Y. Jeong, ICT convergence-based non-face-to-face healthcare technology trend, The Journal of The Korean Institute of Communication Sciences, vol. 37, pp. 77-84, Aug. 2020
2. Research Institute for Healthcare Policy, The latest global trends in digital health, Policy Issue analysis, vol.2, 2020
3. Global Market Insights, "Digital Health Market Share Trends 2020- 2026 Growth Report", Jun. 2020
4. Accenture, "AI and me", Accenture Digital Health Technology Vision 2020, Jul. 2020.
5. K. Paranjape, M. Schinkel, R. N. Panday, J. Car, and P. Nanayakkara, "Introducing Artificial Intelligence Training in Medical Education (Preprint)," JMIR Med. Educ., vol. 5, Sep. 2019, Art. no. e16048.
6. M. Rabbani, J. Kanevsky, K. Kafi, F. Chandelier, and F. J. Giles, "Role of artificial intelligence in the care of patients with nonsmall cell lung cancer," Eur. J. Clin. Investigation, vol. 48, no. 4, Apr. 2018, Art. no. e12901.
7. J.-M. Kwon et al., "Artificial intelligence algorithm for predicting mortality of patients with acute heart failure," PLoS One, vol. 14, no. 7, 2019, Art. no. e0219302.
8. M. Rabbani, J. Kanevsky, K. Kafi, F. Chandelier, and F. J. Giles, "Role of artificial intelligence in the care of patients with nonsmall cell lung cancer," Eur. J. Clin. Investigation, vol. 48, no. 4, Apr. 2018, Art. no. e12901.



INTERNATIONAL
STANDARD
SERIAL
NUMBER
INDIA



INTERNATIONAL JOURNAL OF INNOVATIVE RESEARCH

IN SCIENCE | ENGINEERING | TECHNOLOGY

 9940 572 462  6381 907 438  ijirset@gmail.com



www.ijirset.com

Scan to save the contact details